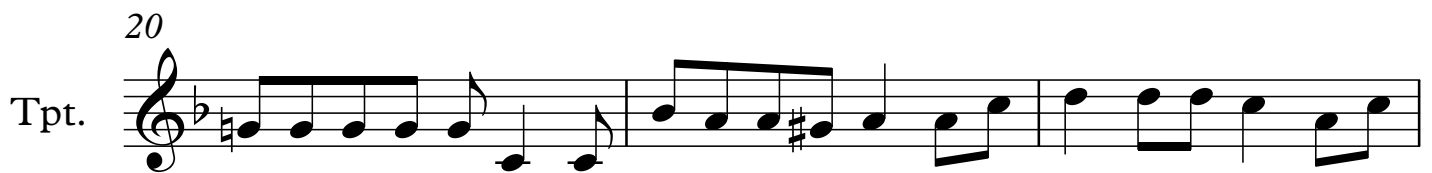
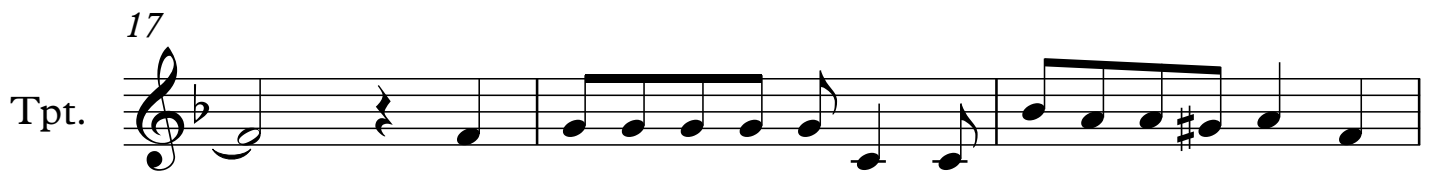
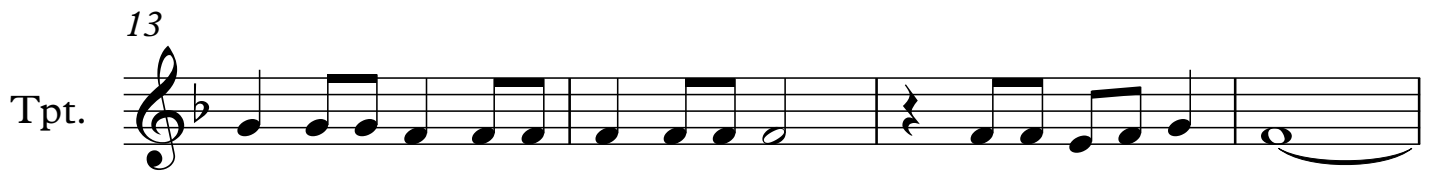
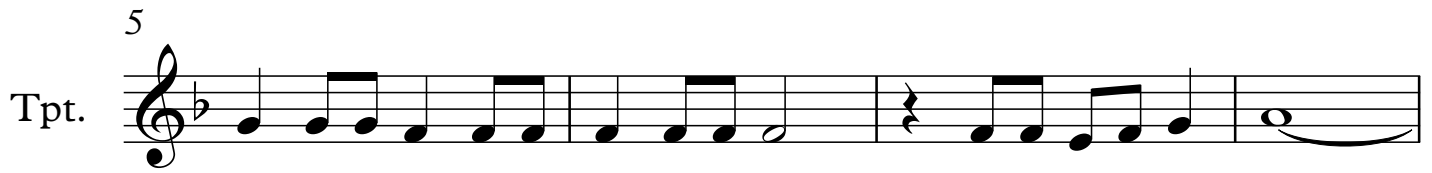
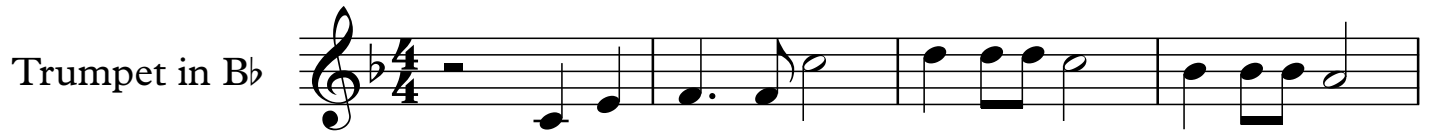


What A Wonderful World

<https://www.youtube.com/watch?v=znF7SZsuZiI>

Louis Armstrong

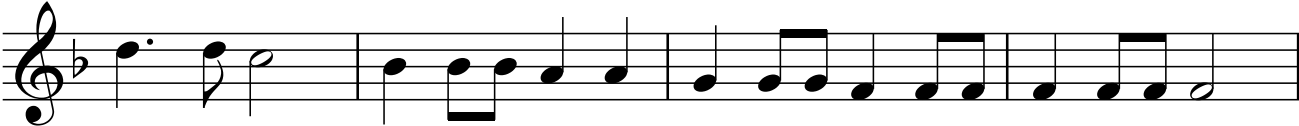
Slow



2

27

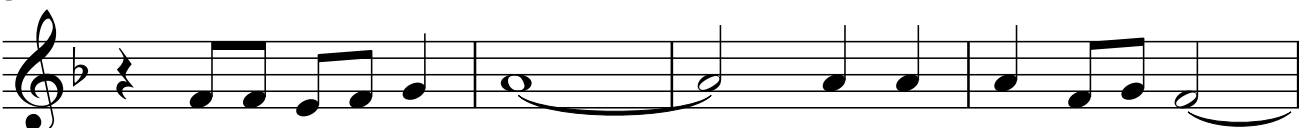
Tpt.



Musical staff for Tpt. starting at measure 27. The staff is in treble clef with a key signature of one flat (Bb). The melody begins with a dotted quarter note on G4, followed by an eighth rest and a half note on A4. The subsequent measures contain eighth and quarter notes, ending with a half note on G4.

31

Tpt.



Musical staff for Tpt. starting at measure 31. The staff is in treble clef with a key signature of one flat (Bb). The melody begins with a quarter rest, followed by eighth and quarter notes. It features a half note on G4 with a slur extending to the next measure, which contains a quarter note on A4. The staff concludes with a half note on G4.

35

Tpt.



Musical staff for Tpt. starting at measure 35. The staff is in treble clef with a key signature of one flat (Bb). The melody begins with a quarter note on G4, followed by a quarter rest and eighth and quarter notes. It includes a half note on G4 with a slur extending to the next measure, which contains a quarter note on A4. The staff concludes with a half note on G4 and a double bar line.